

Soybean

DISEASE CALENDAR

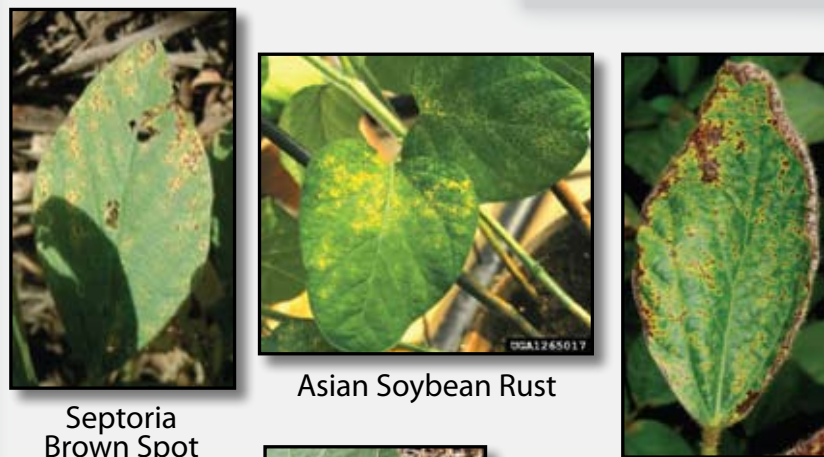


Seedling Diseases



Pythium infected seedlings

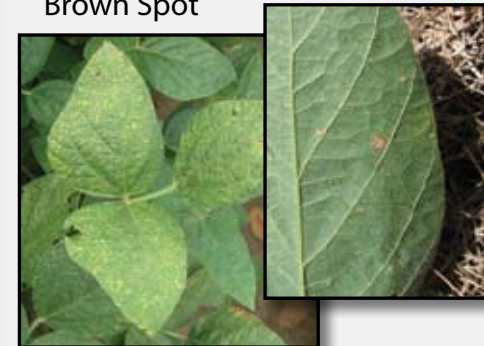
Foliage Diseases



Septoria Brown Spot

Asian Soybean Rust

Bacterial Leaf Blight



Downy Mildew

Frogeye Leaf Spot

* Image unavailable

Sources: Reid Frederick, USDA Agricultural Research Service, Bugwood.org (viewed 4/27/10); Soybean Rust image 1265017
Clemson University - USDA Cooperative Extension Slide Series, Bugwood.org (viewed 4/27/10); Anthracnose image 1235219
Clemson University - USDA Cooperative Extension Slide Series, Bugwood.org (viewed 4/27/10); Pod and Stem Rot image 1235156

Individual results may vary, and performance may vary from location to location and from year to year. This result may not be an indicator of results you may obtain as local growing, soil and weather conditions may vary. Growers should evaluate data from multiple locations and years whenever possible. **ALWAYS READ AND FOLLOW PESTICIDE LABEL DIRECTIONS.** Technology Development by Monsanto and Design(SM) is a servicemark of Monsanto Technology LLC. ©2010 Monsanto Company. BSM041510

Scouting Soybean Diseases

| Seedling Diseases | Foliage Diseases | Root & Stem Diseases | Pod & Seed Diseases |
|------------------------------------|---------------------|--------------------------------------|---|
| Pythium Seed Decay and Damping Off | Septoria Brown Spot | Anthracnose | Phomopsis Seed Rot |
| Fusarium Seedling Blight* | Bacterial Blight | Brown Stem Rot | Purple Seed Stain (via Cercospora) |
| Phytophthora Damping Off** | Frogeye Leaf Spot | Phytophthora Root Rot | Bleeding Hilum (via Soybean Mosaic Virus) |
| Rhizoctonia Damping Off** | Downy Mildew | Rhizoctonia Root Rot | Bud Blight (via Tobacco Ringspot Virus) |
| | Asian Soybean Rust | Sudden Death Syndrome | Pod & Stem Rot |
| | | Charcoal Rot | |
| | | Sclerotium Blight* (Southern Blight) | |
| | | Sclerotinia Stem Rot (White Mold) | |
| | | Stem Canker | |

Root & Stem Diseases



Brown Stem Rot



Sudden Death Syndrome



Sclerotinia Stem Rot (white mold)



Soybean Charcoal Rot

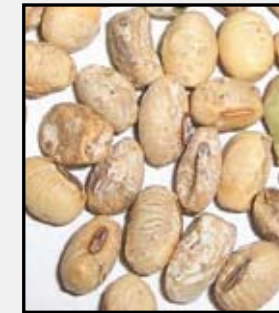


Phytophthora Root Rot



Rhizoctonia Rot

Pod & Seed Diseases



Phomopsis infected seeds



Purple Stain (via Cercospora)



Pod and Stem Rot



Bud Blight (via Tobacco Ringspot Virus)



Bleeding Hilum (via Soybean Mosaic Virus)



Stem Canker



Anthracnose